

Covering Maryland, Delaware and South PA Shows

Car Show & Cruise Guide

www.carcruiseguide.com

FREE

**NOSTALGIA
DRAGS!**



photo by
Mark Scappell

December 2015 / January 2016

Your Local Guide To Happy Cruising!


East Coast INDOOR NATIONALS

Thank you to everyone who took the time to enter a vehicle into the show. Thank you to the companies that set up booth displays to sell goods and wears. And thank you to all those who came out to enjoy a weekend of pure automotive heaven. Though this has gone to print before the show takes place, we know the show sold out of space 3 weeks in advance, we know more than 65 20*20 display vehicle signed up to participate, 260+ vehicles in total, and more than 70 vendors have locked in their participation as well. The amazing support locally and from out of state has been tremendous over the past several months. From the entire East Cost Indoor Nationals Team we want to say thank you for helping us make the 2015 event a success.

Don't forget, make note in your calendar now to clear February 20th and 21st weekend for the 2016 Motorama Races and Shows. If you enjoyed yourself at the East Coast Indoor Nationals this year, ECIN is only an introduction to what Motorama has to offer. Come join us for 1,000,000sq feet of all indoor racing and exhibits in Harrisburg, Pa at the Pennsylvania Farm Show Complex.

Respectfully,
Andy Goodman
ECIN Executive
Producer

JOIN 50,000 GEARHEADS FOR A WEEKEND OF NONSTOP MOTORSPORTS ACTION



MOTORAMA

FEBRUARY 20TH-21ST, 2016
PA FARM SHOW COMPLEX & EXPO CENTER IN HARRISBURG, PA

REGISTRATION OPENS AT 11/01/2015 AT: WWW.MOTORAMAEVENTS.COM

FORD 8 & 9 INCH REARS



We sell new and rebuilt 8" & 9"
Ford Third Members, all parts in stock
for same day pick-up or shipping.

- From stock Trac Loc posi to 2,000 H-P, all out race third members.
- Standard, Nodular or Aluminum case
- 47 Different 9" ratios in stock. Rebuilt or new Trac Loc Posi, new Tru Trac Clutchless Posies, Spools & Detroit Lockers.
- All units carry a six month 100% warranty from time of install.

Give me a call or e-mail to discuss you needs, requirements and pricing.

CHECK MY AD ON EBAY - SELLERS #TJ1141

TJ. Rebert • 1922 Meetinghouse Rd., Boothwyn, PA • Located just off Exit 1 Rt. I-95 in PA.

610-485-4858 • tjrebert2@comcast.net

Contents

December 2015 / January 2016

- 5** Message from Dave **6** For What It's Worth / A Tribute to Jewell Waddell
8 The Metal Meet at Ron's Rods **9** Station Wagons at the Hershey AACA Museum
10 Road Trip! **12** Car Shows and Cruises **18** Cecil Co. Drags and Swap/
Mezz Sezz **19** U.S. 13 Dragway Nostalgia Drags **20** Endless Summer/
A Thank You **21** Jalopyrama **22** The First Annual Big "M" Bash
24 Delaware Park Beers & Gears **26** Club News
28 Lost in the 50's at Marley Station **29** Kip's Tech Tip - Curves
30 Man Caves **34** Perryville **35** Calvert Hall
36 Oxford First Friday Car Show **38** Reader's Rides

Car Show & Cruise Guide

P.O. Box 353 • Forest Hill, MD 21050

410-937-6866 • www.carcruiseguide.com

For advertising opportunities call Dave at:
410-937-6866 or email davebielecki@aol.com

Show and cruise listings may be sent to the above
address or emailed to: davebielecki@aol.com- all are
welcome, there is no charge for charitable events.

Publisher: Dave Bielecki

Editor & Graphic Designer: Hutch

Photos: Bill Ross, Mike Robinson,

Mark Schappell, Mike Kissinger, Chuck Ritzmann

President of TLC Services: Diane Bielecki

Car Show & Cruise Guide, published by TLC Services, Inc., is
published 6 times a year, bi-monthly and distributed in the tri-state
region. Neither the publication nor any of the company's employees are
responsible for the advertising or advertising claims contained herein.
The publisher disclaims any liability regarding product pricing, claims,
descriptions, availability, or condition. We exercise reasonable care
in checking copy for accuracy. However, no warranty is expressed or
implied by the company or its employees regarding product errors, omis-
sions or misprints. No material in this publication may be used without
prior permission from the publisher. Copyright 2015, TLC Services,
Inc., All Rights Reserved. Contact us at 410-937-6866, or email: davebielecki@aol.com TLC Services, Inc- established 1984

ON THE COVER: Capitol Raceway Nostalgia Drags.



Jalopyrama
Hot Rod Show Reunion
Page 21 photo by Chuck Ritzmann

**Car Show
& Cruise
Guide**

**Business Owners
and Show Promoters!**

**Why not join our loyal advertisers
and promote your message in the**

Cruise Guide?

**They know the Cruise Guide
will get the best response than any other car publication or website
in the area. Try us today! Call or email Dave for more information**

davebielecki@aol.com 410-937-6866

A Message from Dave

Happy Anniversary, Merry Christmas, and a Big Thank You

It all seems like a blur, years tick past so fast. It seems like just yesterday when I launched the Cruise Guide; it debuted at the Indoor Nationals in 2010. So this December marks another anniversary for us, all due to the faithful readers, dedicated contributors, and loyal advertisers. We couldn't have gotten this far without any of them. Some naysayers said we wouldn't make it even one year, several tried to spread rumors about our demise several times, but yet, here we are six years later, so Happy Anniversary to us! It has been a good ride so far, looking forward to several more.

Some large companies find themselves unable to continue the wonderful traditions of our past. The great thing about publishing this magazine from a tiny corner in my house is I am not beholden to anyone. No cubical farm conglomerate office and no shareholders to answer to, I don't have to be careful whom we might offend. We are not in the business to say something that might bother a certain portion of the population, but if it does, so be it. No PC here folks, so have yourselves a Merry Christmas!

In the first paragraph, I mentioned the dedicated contributors. While Hutch and I receive some sort of compensation for our efforts, the rest of the folks whom help out do so out of their love

of this hobby, and their own cars. When I started this publication, it wasn't to get rich; it was because of my interest in going to these events, and enjoyment from being part of starting a successful car show. Years later, I'm still trying to figure out a way to make a living trying to put out a print product in an online world. It isn't easy, but it's defiantly worth it. So, here is a big "Thank You" to everyone whom shares my passion of being around these old cars.

For those of you whom have been paying attention, **The Custom and Classic Car Educational Foundation** is a year old now, our goals are on track. The twelve directors have been busy behind the scenes making sure we planned correctly and have a firm platform to carry out our mission. In 2016, you'll be able to see some of our goals carried out. Want to help us promote your favorite pass time to the younger generations? Join the car clubs and organizations that have already donated to the cause, and make a tax deductible gift to further our mission. You can find a form on page 16 or visit the website and donate online. You have often wondered what's going to happen to these cars we all love so much when we are long gone, so here is a way you can help. I promise, this will be worth it.

Merry Christmas, Dave



For what it's worth...

By J.D. Kurzmann



PEDIGREE..... According to Merriam-Webster's dictionary, pedigree is "the origin and history of something, especially when it is good or impressive". Okay, I give up, what does a pedigree have to do with Street Rods, Muscle Cars, and cruising.....Well, a lot if you are in the market to buy or sell a collector car. You see, since the day when vehicles were owned by celebrities and one-of-a-kind proto-type cars, a collector car that has some "history" or documented "pedigree" will definitely bring more money than a similar model without it. Let's take for example a 1967 Corvette.

The particular model I am writing about is a roadster (convertible) with a 427 cubic inch Chevrolet engine, 4-speed M-21 transmission, and the original 3.31:1 posi-traction rear differential. Starting in 1967 Corvettes had, what are called, "tank stickers" on the top of the gas tanks, showing all of the options that particular car came with from the factory. It listed everything from the paint code to the engine. This item, along with the Protect-o-plate, the build sheet, trim tag (located under the dash on the passenger side), and dealer window sticker can add as much as 25% to an original Corvette's value. Sure, the car can have the original engine, which has the I.D., year, and VIN stamped on the engine block (if it has not been 'decked') along with the transmission tag, and rear differential, I.D., but to make the car truly verifiable, the paperwork needs to accompany the vehicle.

Various Pontiac models are similar in 'pedigree' too. To be sure you are buying a "real" GTO Judge, or Ram Air car, the Pontiac Historical Society (PHS) provides a copy of the full documentation for any Pontiac VIN. Just log onto their website, pay \$25 and they will send you the original "build sheet" for your car. This really comes in handy when looking at mid- to late 1960's Pontiac muscle cars.

With the increased number of "clones" or "replica" cars being built by private individuals and dealers; having the seller provide the correct documentation for a true classic has become a "must" to attain the maximum selling price for an original and numbers matching muscle car. Happy motoring and hope your Holiday Season is peaceful and safe.



**635 Erie Street
Havre de Grace, MD**

*We offer complete restorations,
body & paint, fabrication, all types of welding
(steel, stainless & aluminum), tube bending,
metal shaping, differential narrowing
& suspension work*



www.VissersRod.com

410-939-0448

A Memorable Tribute to

Jewel Waddell

Who would have thought that a tiny, 4 lb., Yorkshire Terrier could mean so much to so many? As lots of us "car guys and gals" found out, this tiny Yorkie named Jewel was owned by Howard and Mary Waddell. Jewel wasn't like most other Yorkies, she was a "car gal" right along with her Daddy. She loved cruisin' to shows and strutting around on her leash. Jewel made a lasting impression on everyone she met and we knew she put the sparkle in Howard's eyes.

For me, one Jewel led to another. After meeting Jewel at a show, I got to know her owner, Howard. About a year later, Howard told me he wanted to sell his 1951 Ford F1 Truck. After I bought the truck, I loved Jewel so much that I put her name on it!

For all of us that knew and loved this incredible Jewel, she has passed over the Rainbow Bridge on October 21, 2015. Our deepest sympathies to Howard and Mary from everyone at the CS & CG.

Written by Anita M. Hill



Ron's Rods

410-592-7148

Kingsville, MD

**IF IT'S
METAL WE
CAN FIX IT**



1930 Ford Limousine

**We have built many
National Show Winners!**

- We can copy panels for restorations and make custom body panels and floors.



1953 Dodge Truck

- We build turn-key hot rods
- Body Stretches
- Custom bodies and frames
- Suspension modified

Shop Equipment:

- P9 Pullmax
- Two English Wheels
- Planishing Hammer
- Jump Shear
- Box Brake
- Slip Roll
- Edge Turning Tool
- Rotisserie

Collingdale

PERFORMANCE, INC.

We offer a full range of services for your hot rod. This includes everything from routine maintenance and high-performance tuning to full out custom builds. We are well equipped to take care of all of your automotive needs, regardless of how big or small they may be. Contact us to reserve your appointment now.

Your One Stop Shop. We DO IT ALL.



Hours of operation • M-F: 8am-5pm, Sat: 9am-1pm

**710 Macdade Blvd
Collingdale Pa 19023**

610-461-5033

www.collingdaleperformance.com

1991 WEST ST. ANNAPOLIS, MD 21401

**INSANE
CAR AUDIO**
MOBILE AUDIO SECURITY ACCESSORIES

**SE
HABLA
ESPAÑOL**

SUBWOOFERS & ENCLOSURES

GPS NAVIGATION

MOBILE VIDEO

REMOTE START

ACCESSORIES

SPEAKERS

AMPLIFIERS

WINDOW TINTING

CAR ALARM

**MARINE APPLICATION
& INSTALLATIONS**

FACTORY BRANDS

KENWOOD VIPER AVITAL ALPINE KICKER Pioneer

phone : (410) 897-0044

INSANE.CAR.AUDIO@HOTMAIL.COM
INSANECARAUDIO.COM



The METAL MEET At *Ron's Rods* September 27

Ron Yeager and the gang of **Ron's Rods** are first-class fabricators, and on September 27th, Ron, Dan and Jordan hosted many talented craftsmen from the Tri-State area to the shop in **Fork, MD** to take on a task that is way beyond the skillset of most hotrodders- to build the body from scratch. The team went from drawings and made a wood skeleton over which copper panels were formed. It will be a boattail roadster, and the car will probably be seen at a Spring '16 carshow. They're already planning a sedan project.



This is Jordan Shara of Ron's Rods. He's the kind of guy that is the future of the hobby. Super-talented with traditional tastes, he gets it. We will be doing a feature on him and his personal '32 project next issue that he says will be Old School all the way.



**Stop by and
check out
our showroom
today!**



**We're conveniently
located at 7154
Ritchie Highway in
Glen Burnie, MD,
which is just off 695.**

BUY

SELL

TRADE



FINANCING AVAILABLE

SHIPPING AVAILABLE

www.bpmcars.com



410-553-6211





HERSHEY AUTO PARTS
"We Have The Part You Need"

The Best Customer Service You'll Ever Get!

Brake Special

Mention this Ad and get
50% Off list

H HERSHEY'S AUTO PARTS
WAREHOUSE
DOMESTIC & IMPORT

VISA MasterCard



Raybestos
The *best* in brakes®

ELEMENT 3
ENHANCED HYBRID TECHNOLOGY
AUTOMOTIVE BRAKE PADS

New Hybrid Technology
Delivers Unprecedented
Braking Control and
Stopping Power

The best attributes of ceramic and
semi-metallic in one brake pad

BRAKE PARTS INC

**WE'VE GOT THE PART YOU NEED IN
OUR OVER \$2,000,000.00 INVENTORY**

We Are A Wholesale Parts Supplier Please Do Not Call Or
Come In If You Just Want To Price Shop. The Repair Shops
Are Our Customers And We Will Not Compete With Them!

(410) 838-2620 (410) 879-6737

215 WEST BALTIMORE PIKE, BEL AIR,

Is YOUR Parts Supplier "PART OF YOUR BUSINESS SOLUTION" "OR PART OF YOUR COMPETITION?"
Hershey's commitment is to our wholesale customers. We do not discount retail over the phone!

AACA Museum - Station Wagons!

photos by Mike Kissinger



John Harding's '57 Mercury Commuter was featured in June 'Reader's Rides.'

Road Trip!



Last issue, we were headed to Stroud, OK, home of the Rock Café. We met the owner, a super nice lady, and had the friendliest waitress ever wait our table. Bryan and I thoroughly enjoyed our lunch and taking in the whole experience. These folks really embrace Rt. 66 tourism. Many of the customers complimented us on doing this run in a vintage car. After lunch, we continued on Rt. 66 towards Oklahoma City. Much of the route is still a commissioned highway until you reach OKC, then it becomes Historic Rt. 66 again.

We visited a friend in Mustang, OK and stayed at the only hotel in that town. I found it ironic the hotel was called The Luxury Inn, as this place was the complete



Primo parking spot at 'The Big Texan.'



*St. Louis Arch-
"The Gateway to the West"*

opposite of luxury. But it served a purpose. And it was conveniently located between two auto parts stores, because here is where a brake line decided to rupture.

After a valiant attempt to fix the leak on the hotel parking lot the next morning, I quickly decided I could not continue with the limited tools and resources I had while the humidity steadily increased. Courtesy of AAA, the Impala was towed to Mustang Automotive for the necessary repair. Five hours later, I was back on the road.

Because of this delay, we had to skip some of the points of interest we wanted to check out along the way through western Oklahoma and the pan handle of Texas. Dinner time found us in Amarillo, TX at the Big Texan Steakhouse, a Rt. 66 attraction since 1966. This is home of the 72 ounce challenge, where you attempt to eat a 72 ounce steak and ALL of the sides in under an hour and it's free. Although we were hungry, we were not that hungry. If you are ever in the area, I highly recommend eating there!

For the second time, I was forced to drive by Cadillac Ranch on the outskirts of Amarillo as we had to meet up with my wife, Claire in New Mexico. She was on her own road trip and we decided to meet somewhere near Albuquerque. Around 10 PM, we met her in Moriarty, NM, where there is a fireworks store on every corner!

While the Impala was being repaired in Oklahoma, I was able to find a replacement air filter. And on this leg of our journey, the Impala knocked down 19 MPG.

The next morning, we ventured back out on I-40, which parallels much of Rt. 66 in New Mexico and Arizona. Since Bryan had a dentist appointment the following day, we kept sightseeing to a minimum in the interest of getting home. We have actually driven much of Rt. 66 in AZ



World's tallest Cross. Hope nobody's offended.

Awesome sunset in New Mexico.



already, so we took the quickest route possible back to Peoria, AZ.

I'd love to make this run again when I have more time and more knowledge of Historic Rt. 66. Much of it appears to have withstood the test of time, but much of it is crumbling and probably won't be around much longer. See 'ya at the shows!

— Rick & Brian Eckenrode

Route 66 Museum near Stroud, Oklahoma.



The Brookshire, one of the original structures on the Route.



9718 Pulaski Highway Middle River, MD 21220

410-687-1200 www.mdperfspec.com

Your Full Service Speed Shop

Parts, Installations, Fabrications & Custom Shop

Some of the Services We Offer:

Performance and Custom Parts at Great Prices

Turn Key Builds

Fuel System Upgrades and Fuel Injection

Full Fabrication Service, Back-halves, Roll Bars, etc.

Differential and Suspension Upgrades

Engine Performance Upgrades

Complete Custom Wiring

WE DO IT ALL TO MAKE YOU SHOW-N-GO!



Car Show Update

East Coast Indoor Nationals Dec 5&6
at the Md. State Fairgrounds 2200 York Rd,
Timonium Md. This event is always a good time
for all and a great way to end the cruising season!
The Cruise Guide is an Official Sponsor
717-865-2085 www.eastcoastindoornats.com

Street Survivors of Md. Christmas Car Show & Auction December 13

Breakfast 8:30 – 11 (\$8.50 at the door) ; Car
Show 8:30- 1 \$15 Benefits Juvenile Diabetes
Found. PLEASE NOTE- this is at a new location;
Dewey Lowman American Legion Post
109 , 1610 Sulphur Spring Rd. Arbutus, Md.
21227 Chris 410-761-1927

Toys For Tots Car Show December 19th,

1-4 416 West Belair Ave. Aberdeen, MD 21001
The old B&O Railroad Station. Toys for Tots;
bring the kids and get their picture taken with
Santa (2 to 4 pm) . To register your car just
bring a toy and have a chance to win a trophy!
Santa will be outside but in heated area. Yes,
there will be coffee and hot chocolate. Let's
end this year with gifts to give. Event is hosted
by The Pistons Street Rods. 443-824-6778.

Posies Open House January 9th from
8am- 12 219 N. Duke St. Hummelstown, Pa.
717-566-3340

Classic Auto Parts Swap Meet Car Show & Auction January 23, 2016

7am – 3 pm rain or shine 25631 Auction Rd,
American Corner 7:00 AM TO 3:00 PM 410-
754-8826

Dover Downs Luncheon January 31st;

All are welcome; starts at 12 Noon. Become a
Gold Card Member and receive \$2 off lunch.
Pay as you enter, will be held no matter the
weather. If you wish, bring your favorite ride
along. For more info, call Tom 302-584-3569
–OR- Bob 302-690-0798

Motor Menders Winter Beater

Cruise Feb 13 from 11-3 at the Markets of
Shrewbury 717-235-6611

Kent Island Cruisers All Club Break-

fast February 13 - starts @ 8 am KI VFC
1610 Main St. Chester, Md. \$10 443-562-
2588 bad41willys@msn.com

Motorama Events Rod, Custom & Tuner Car Show Feb 20 & 21

Pa Farm
Show Complex 2300 Cameron St. Harris-
burg, Pa. Dan 717-865-2085 www.motoramaevents.com

Balto and S. Pa. area All Club Break-

fast Feb 20, 2016 from 8-11 am Hosted by
the Car Show and Cruise Guide Held at 1452
Jarrettsville, Md. 21084 RSVP by 2/15 .

We invite 2 members from each club or organization to come Dave 410-937-6866 davebielecki@aol.com

Unity Thunder Car Show March 4,5,&6

at the DC National Armory 202-327-1881
www.unitythunder.net

Lower Delaware All Clubs Breakfast

March 12 8-11 am \$10 adm. Held at the
Millsboro VFC 109 E. State St. Millsboro,
De. Rusty 302-934-7377

Antique Auto Parts Flea Market

March 12 from 7 am – 3 pm Rain or Shine
at Howard Co. Fairgrounds Rt. 144, West
Friendship, Md. Free Parking & Adm. 443-
744-6338 www.chesapeakeaaca.com

Sugarloaf Mountain Region Antique Auto Parts Swap Meet March

25th & 26th, 2016 – FREE ADMISSION!
Doors open at 8am (set-up 10am 3/24/16).
Held at the Carroll County AG Center,
Westminster, MD 21157. Call: 301-829-2000,
Email: smraaca@

*Don't forget to send in your 2016
events- look in our December issue for
our annual breakfast date where you
can share this information with fellow
cruisers Thanks, Dave B.*

Great Gift Idea!

Car Show & Cruise Subscriptions



**SIX
GREAT
ISSUES**



**TO
YOUR
DOOR!**



I would like to order a 6 issue subscription to the
Car Show & Cruise Guide for \$20

Name _____

Address _____

City/State/Zip _____

Email _____

Phone Number _____

☐ A check is enclosed for my subscription (\$20)

Please make check payable to: TLC Services, Inc.

Mail this form and your check to

Car Show & Cruise Guide, P.O. Box 353, Forest Hill, MD 21050

Attention Cruisers:
Most cruises run April-October, unless otherwise noted. Also, if there are any changes, please send them to us: davebielecki@aol.com or mail to CS&CG PO Box 353, Forest Hill, Md. 21050
- Thanks, Dave

Cruise Nights

Lowe's Cruise

Fridays 414 Constant Friendship Blvd, Abingdon, MD; 4:30-11 p.m. Open to all vehicles DJ, videos and nostalgic drag footage on a 22-ft screen www.lowescruise.com

Motor Menders Rod & Custom Cruise

Nights At the Markets of Shrewsbury, **4th Friday** of month. Rain Date following Friday, except Sept. www.marketsatshrewsbury.com

Ghost Ryderz Cruise-in **Fridays** 6-9pm at the Pep Boys in Glen Burnie all welcome. Kenny 410-370-6045

Delaware Cruise Night **1st Sat** is Pike Creek, **3rd Sat.** is Fox Run **4th Sat** is Delaware City, (Crabbydick's) starting in March. 302-998-4514 Gary Carr 302-525-1571 / Preston Rice 302-252-7170

Yesterdays Chevrolet Cruise at Fox Run **3rd Sat** April-Nov. New Castle County Del's favorite cruise! Mike 302-757-3664

Cruise Nights at Jake's Burgers Millsboro- next to BJ's 4-9pm **First Sat** of the month, April-Nov. Russ 302-934-7377

Millsboro Dairy Queen Cruz-N Every **Tuesday Night** 6-9 pm Rusty- 302-934-7377

Lost in the 50's Car Club April through October **Sat. nights**- Marley Station Mall, Ritchie Hwy near Rte 100 in Glen Burnie, MD 5-9pm

Kent Island Cruisers Cruise Nights Kent Island/Stevensville, April through October, Every **Tuesday** from 6pm til? At Rita's Ice, next to Kmart, Exit 37 off route 50/301. Buy one/get one free at Ritas with your old car! www.kentislandcruisers.com email: bchevy7@yahoo.com Find us on Facebook for events details!

Eldersburg Saturday night cruise will now be held at the Home Depot lot- Eldersburg, Md. Local Restaurants Include: Chili's, KFC, Five Guy's, Franks, & Glory Days

Hump Day Cruise **every Wed** 4/3 to 10/30 5-9 at the Marlboro Sq. Advance Auto Parts lot 5775 Crain Hwy Upper Marlboro, Md Van 301-873-6413

Gino's Wednesday Cruise Ritchie Hwy & 5th Ave, Glen Burnie, Md. John 410-320-2900

Street Survivors Car Club **Fridays** in the BACK lot The Centre at Glen Burnie Mall 5-10 p.m. Opens April Call Rick @443-829-5658 www.streetsurvivorsofmaryland.com

Downtown Elkton Show (Main & North) **4th Thurs** of the month, 5-8pm 410-398-5076 www.elktonalliance.com

Chesapeake Classic Car Club Cruises Waterside Village Shopping Ctr.-Easton, Md 5-8 pm, June- Oct. Gary 410-822-8135 emailto: yfaulkner9332@goeaston.net

Downtown Denton Cruise-In 2nd Friday of the month, May thru Sept. 6-9 pm Market St. Denton, Md. Dean 410-479-1545

Dunkin Donuts Cruise **Friday nights** Beardshill in Aberdeen Clint 443-824-6778

Asphalt Angels Glory Days Grill **Monday eves.** 15505 Annapolis Rd. Bowie
New Location-at Chili's & the Boarder restaurants, 16401 Heritage Blvd. Bowie, Md. Monday Evenings Joe 301-523-2368

VFW Post 467, Westminster, Md. **Friday nights** starting May 410-848-9888

Westminster Denny's **Every Saturday** night 4-8 PM - whenever. Rhonda (410) 871-1524

Golden Gears Cruise -in **every 2nd and 4th Saturday** located at the Westview Promenade Shopping Center on Rt. 85 in Frederick, Maryland. Hours are 6:00 - 9:00pm. 240)373-1753

Littlestown ACE Cruise-In 790 W. King St. Littlestown, Pa. **2nd & 4th Sat** 5-9 pm from June- Sept. 717-359-9227

Wheels that Heal Car Club K-Mart Lot Rt 50 & Tilghman Rd Salisbury www.wheelsthatheal.com

Soul Riders of Delaware Rt 13 at Kimothy's Restaurant 302-378-2855

Del Rods Cruise Greentree Plaza Rt 8 in Dover Del. **2nd & last Sat.** of month 5-9pm www.delrods.org

Blue Moon Cruisers At the Silver Spring Diner Rt 114 At Harrisburg Sonic Linglestown Road Contact club for dates and times; John @ 717-574-1426.

Chick-fil-A of Bear, Delaware. Cruise **Sec-ond Sat** of month 2-5 pm cfabear@gmail.com

Walmart Saturday Night Cruise is Back! 8118 Perry Hills Ct. Notingham, Md. Rick 443-847-3220

Cruise Night at Alex's Snowcones & Ice Cream 16041 Frederick Rd, Lisbon, Md. **Last Saturday** of the month thru October 5- 10 pm Karaoke. Cruise on in for a night of fun!

Southern Maryland's Midweek Cruise-In **every Wednesday** evening thru October - 5pm till.. Shops at Breton Bay 40845 Merchants Ln.(by Arby's in Leonardtown).

Rock Hall Cruise Nights by Smilin' Jake's. Rain dates are following Friday starts @ 5:30 pm 410-639-7280

Boardwalk Cruise Nite on the Bay at North Beach. Plenty of parking. Over flow can park in front of condo. Farmer's market. Good food. Neat little shops. Free to all. All years welcome. **Every Friday** 5 to 8 pm. May thru October.

Cruise Nights *continued*

Artic Circle Wednesday Night Cruise in Churchville Clint 443-824-6778

Philly Flash Cruise Nite every Saturday, May thru October in Dunkirk, Md, route 4 from 4 pm to 9 pm. Car Nutz. 410 535 1933.

Ford State Mustang and Ford Club, Pike Creek Monthly Cruise; Second Saturday of each Month, April-October; Ruby Tuesday's, Pike Creek Shopping, Center 4732 Limestone Rd., Wilmington, DE 19808, Tim 302-545-7934 www.first-statemustangandford.com

Pizza Palace Cruise-In **Third Monday** of Each Month, March to October; 5-8PM; Rain Dates are Scheduled for the Following Week; Levin 302-500-1128

Bay Side Mustangs 2015 Cruise Nights are at the Greene Turtle 3213A Solomon's Island Rd Edgewater, Md. from 6pm until 8pm starting Mar 12th thru Oct 29th. www.baysidemustangs.com

Sunday Morning Cruise-In Street Survivors of Md. At Bakery Express 8-10:30 am 4711 Hollins Ferry Rd. Halethorpe, Md. 443-829-5658

Advanced Auto Store Saturday Night Cruise located at 8820 Belair Rd. Md. In Perry Hall. (Corner of Belair+Silver Spring Rds behind Patient First). Inside to register

East Penn Modifiers Cruise Inn's First Wed of the month thru Oct. 680 Bethlehem Pike Rt 309, Montgomeryville, Pa. Next to Comfort Inn 215-313-7033

Cruise with the Boys **1st and 3rd Thursdays** March-October From 5:30-8:30pm 403A Baltimore Pike Bel Air Md 21014 Questions Call Aric 410-838-1000 ext3

Cars and Coffee with the Boys **Last Saturday of the month** Year Round 9am-11am. If it's bad weather we will have coffee and car talk in the Speed Shop 403A Baltimore Pike Bel Air Md 21014 Questions Call Aric 410-838-1000 ext3

Tri-County Cruisers Every Tuesday Night Cruise April-Oct 5pm-til at the Brandywine Crossing Shopping Ctr. Crain Hwy. in Brandywine, Md. Paul 301-751-5705

Motor Menders Saturday night Cruise at Red Robin Starts **April 11** **2nd Sat** of each month, Rain date following Sat. 1550 Mount Zion Rd. York, Pa. 17402 motormendersrodandcustom.com

Ocean City Cruzers Cruise-In at Tractor Supply Rt-50 & Old OC Blvd. **2nd Wed** of Month Bill 301-534-6004

Mason Dixon Car Club Cruise Night at Daltown Family Rest. 2695 S. Queen St. York, Pa. 17402 **1st Sat** of month starting 5/2 \$5 donation to show car/free to public 717-244-0994

Kirkwood Hwy Bruster's Real Ice Cream Cruise 1620 Capitol Trail Newark DE 19711 **4th Wed.** April - September 5PM - until 302-368-9991

Ed Pluck Memorial Cruise for the Troops sponsored by the Top Dead Club at the Whiteland Town center Rt 30 & 100 in Exton, Pa. 5pm-till.. 484-206-5109. TDC- motorclub.com

TGI Fridays Cruise Nights 19266 Coastal Hwy. Rehoboth Beach, De. **Thursdays;** 4PM-9PM. Will run from May 21- Oct .Harry Letner 302-855-1367

Mark Woods Cruise Night at Jimmy Cone Mt Airy. **1st and 3rd Saturdays** April through October. Rt. 144 and Main St. Info call Mark Woods 301-641-6405

Rosedale American Legion Cruising **Thursdays** 1331 Seling Ave. Rosedale, Md. from 6-9 pm Bernie 443-610-5236

Big Rick & Cleves Friday Night Cruise at Perryville Outlets **2nd Friday** 5-9 pm hosted by Perryville Outlets on Heather Ln. in Perryville, Md. Big Rick 410-457-0470.

Dundalk Md. Pep Boys Coffee & Cars Cruise **2cd & 4th Sunday** Chris 410-285-4820

Exton, Pa. Pep Boys Cars & Coffee Cruise 8-11 **1st Sat of month** 220 N. Pottstown Pike Exton Poke 610-524-9800

Dream Machines Cruise at Denny's 6400 Ridge Rd, Eldersburg, MD every **2nd and 4th Saturdays** from 6-9pm. www.dmccarclub.org 410-795-4559

Cumberland Valley Classic Car Club Cruise nights at the Iron Skillet 1179 Harrisburg Pike, Carlisle, Pa. 17013 4-7 (8/8,9/12,10/10) Brian 717-440-4441

Catonsville Pep Boys Cars & Coffee **2cd Sat** 8-11am 6515 Baltimore National Pike, Catonsville, Md. Mike 410-788-2525

Mechanicsburg Pep Boys Sip & Swap **3rd Sunday** 8am-12pm Swap Parts & Stories 6100 Carlisle Pike Mechanicsburg, Pa. Herb 717-691-0860

Grotto Pizza, Route 26, Bethany Beach, DE 9am – 11am. **1st, 3rd and 5th Wed.** of each month. Cars & Coffee goes all year. Across the street is the Bethany Diner open all year. Grotto opens at 11am. Bob S 845-656-5438



WHITE MARSH MUFFLER & BRAKES

410-335-2497

11250 PULASKI HWY

WHITE MARSH, MD, 21162

WHITEMARSHMUFFLER@GMAIL.COM



WE HAVE BUILT MANY AWARD WINNING SHOW CARS
UNBEATABLE PRICING, RELIABLE SERVICE.
SERVING THE COMMUNITY FOR OVER 20 YEARS.

- Custom Dual Exhaust (Stainless Steel or Aluminized Tubing and Mufflers offered)
- Large Diameter Single and Dual Exhaust for Diesel Trucks
- Performance and Stock Engine Rebuilds
- Total Rewiring
- Headers
- Digital/Custom Dashes and Gauges
- Rear Differentials
- General Maintenance on All Your Cars



For more information visit our website at whitemarshmuffler.com



**NOSTALGIA
DRAGS!**



photos by

Mark
Schappell



JBS AUTO MACHINE
 Specializing in Custom, Stock, Antique, Marine & High Performance Machining & Engine Rebuilding
410-686-6530
 9701 Philadelphia Road Baltimore, MD 21237
www.jbsautomachine.com

Your Collector Car Insurance Specialist



Spiece Insurance

Kim Spiece

Independent Agent



PO Box 509
 Gilbertsville, PA 19525

610-427-3593

Cell (610)451-1249



Notary Services Available

www.spieceinsurance.com



*Doug is President of the
 Classic and Custom Car
 Educational Foundation*

Foundation Update

Hey everybody... By the time you read this we will have had our largest Fundraising event, so far. At the East Coast Indoor Nationals we will raffle off several high-value gift cards for the Richard Petty Driving Experience along with several limited edition foundation T-shirts. Hope-

fully, in the next edition of the Cruise Guide we'll be able to tell you how that went... Let's hope it indeed goes well.

I'm also happy to tell you that we have begun making plans to send some lucky youngster to McPherson College for one of their Mini-Sessions. This should be scheduled for some time in June so I encourage all of you to speak with young people that you know that may be interested in the "automotive arts"...mechanics, automotive technology or perhaps body and paint; and have them apply for this exciting opportunity, or one of the regions trade schools which offer Automotive Technology. This individual can be male or female and should live in the mid-Atlantic area. An online application should be on the website in January. Over the last couple of months we have been the beneficiary of several car shows. We are greatly appreciative of those clubs and events that have donated to our cause. The fact that we are actually able to offer our first scholarship is directly attributable to those donations. A big thank you to the Piston's Street Rods, and the Budget Cruisers'. One other piece of news is that we are planning a bull roast for some time in the spring. Details at this point are sketchy but we will announce further plans in the February Cruise Guide, and their annual breakfast. Stay tuned. Let me take this opportunity to wish each and every one of you a wonderful holiday season. For me it's a Merry Christmas; but however you celebrate this holiday season, I hope it's a joyous one.

Doug Wood, President of the Custom and Classic Car Educational Foundation



Please consider supporting our efforts to Preserve the Custom & Classic Hobby by making a tax deductible donation:

Yes, I wish to help the foundation reach a new generation of enthusiasts

I wish to donate ☐ \$10 ☐ \$25 ☐ \$50
☐ \$75 ☐ \$100 or other

Name

Address

Email or phone

send donation to:

Custom & Classic Car Educational Foundation

PO Box 2594

Westminster, Md. 21158

For comments or questions about the Foundation, contact

Dave Bielecki 410-937-6866 davebielecki@aol.com



**150+ LOCATIONS
NATIONWIDE
AND GROWING...**

Pick up the
Cruise Guide at these
Speed Shop locations:

Delaware:

1164 Pulaski Hwy., Bear
919 N. DuPont Hwy., Dover

Maryland:

1911 West St., Annapolis
1503 Merritt Blvd., Baltimore
6515 Balt. National Pike, Baltimore
403A Baltimore Pike, Bel Air
1120 W. Patrick St., Frederick
7311 Ritchie Hwy., Glen Burnie
13344 Laurel Bowie Rd., Laurel
9909 Pulaski Hwy., Middle River
3390 Crain Hwy., Waldorf

Pennsylvania:

4949 Jonestown Rd., Harrisburg
220 N. Pottstown Pike, Exton
2080 Lincoln Hwy., Lancaster
6100 Carlisle Pike, Mechanicsburg
145 Shoemaker Rd., Pottstown
3401 Plaza Dr. Reading
222 S. Westend Blvd., Quakertown
470 Loucks Rd., York
982 W. Street Rd., Warminster

**Smoke 'em
if you got 'em**

*Thousands of performance parts and accessories
on our shelves—plus thousands more available.
We have experts at all our locations that can help
with any project you are working on.*



*We Refill
**NITROUS
OXIDE***

Visit
PepBoys.com/speedshop
to find a Pep Boys Speed Shop near you


facebook.com/speedshop



Cecil Drags & Swap Meet

John Presley's Event on October 17th was a big success.

NOSTALGIA DRAGS!

photos by Bill Ross



Mezz Sez...

More tales from one of the local founding fathers of Speed

It is a new era for Muscle Cars; who would believe you NOW can put a quarter in the slot and get 700 horse power? Now the fact that 700 hp being piloted by 200 hp drivers is a little scary. Modern tech is working on a driver-less car, so 700 hp driver-less car is like a horse without a rider. So, in the future if you park your car in a lot, will gravitate towards other cars, forming a herd? They might even will choose a leader and advance against mankind. Just the other day, the Google driver-less car was pulled over for going too slow. Turns out the poor officer didn't know whom to issue a ticket for impeding traffic, the car or the passenger? He was too confused, so no one received the citation. With this type of thinking I should run for political office.

2016 is going to be the year of the great auto parts wars. Looks like it will be one chain buying another, now offering the best prices and best service. It reminds me of the burger wars. Come and get the best car wax known to man cures all, even raises your I Q. If car wax makes you smarter, why are we being taken over by driver-less cars????? Just a few thoughts to ponder, from an escapee of the local mental institution. Yea, I'm crazy, still offering good old fashion service and advice.....

I have to mention the good work the Custom and Classic Car Educational Foundation is doing for the hobby. You should consider making a tax deductible donation before the end of the year. 2015 is quickly beginning to just be a memory, but a good one.



U.S. 13 Dragway Nostalgia Drags



**NOSTALGIA
DRAGS!**



*photos by
Mark Schappell*



Holy crap, it's a Chevette.

Oh no, and a Gremlin...

Yikes! A Pacer? On a dragstrip?



KEMP'S AUTOMOTIVE LLC
 Complete Car Care: *Foreign & Domestic*
 500 D Bynum Road Office: 410-838-8717
 Forest Hill, MD 21050 Cell: 443-243-3624



Customvan.com
YOUR ONE STOP VAN SHOP!
 FIBERGLASS PARTS
 RUNNING BOARDS
 ELECTRONIC GADGETS
 INSTALLATION OF PARTS
 RENTAL OF WORKSPACE
 AND MORE!
1-800-495-VANS
 CALL US TOLL FREE!

Endless Summer in O.C.



more photos on www.carcruiseguide.com

A very special “Thank You”

to the good folks that help to get your free magazine into your hands...

Over the course of the last three months, many of you have asked me why they don't see me at a car show every waking moment of my life. Shouldn't I be at their favorite event? We saw you last year; you should be here because my show is more important to the other dozen events going on today. Over the last several years, I have done my best to be out and about as much as humanly possible. The two years that I worked full time elsewhere, I took my personal and vacation days to make sure the magazine was out, and you had content you would enjoy.

So life just got in the way, and not in a good way. I might even have tried to avoid being out and having to say everything was fine when asked. I didn't want to share health problems, or the terrible family tragedy that we endured. I shared these things with a few of you, and for those of you that were wondering, things are getting better. My wife has been extremely strong, and I'm doing my best to help her move on. In my younger years, I owned a landscaping business, which took a major toll on my body. Big aches and pains crop up at times. Anyway, I found it almost intolerable to walk or stand for too long. After months of therapy and injections in my back and knee, I'm now ready for the 2016 car show season. Thank you for the well wishes.

I share this with you now not to gain any sympathy, but for you to realize that I don't just wave a magic wand and whip up the Cruise Guide. If it were just up to me, it wouldn't happen, especially during times like this past fall. Your free publication comes out on time, every other month, and online every month because of the help of your fellow car enthusiasts. They are the ones that get out to so many events to take pictures (so many, we just can't use them all), write regular columns, gather up show listings, and help to deliver the magazines. Without them, it just couldn't happen, so I would like to personally thank them, and if you run into any of them, please also do so.

So a big thank you my friends is in order: Hutch, Bill Ross, Mike Robinson, Drew & Anita Hill, Bill Bradley, John Presley, Mark Schappell, Mike Kissinger, Wendy Gilbert, Tom Patterson, Clint & Vicky Powell, Mezz, JD Kurzmann, Rick Eckenrode, George Rust, Chuck Ritzmann and the many of you that just take a bundle or two of the Cruise Guides to share with your car clubs or friends.

So as you can see, without these good folks whom donate their time and efforts, and the loyal advertisers, there would't be a Cruise Guide. Thank you, Thank You, Thank you all. — Dave



Jalopyrama

Hot Rod Show Reunion

October 24th I think this new venue worked well for the show on October 29. Most folks I talked to were thrilled with the 140 cars inside and probably 200 plus outside. -Chuck Ritzmann

photos by
Chuck Ritzmann.



The

**BIG
M**

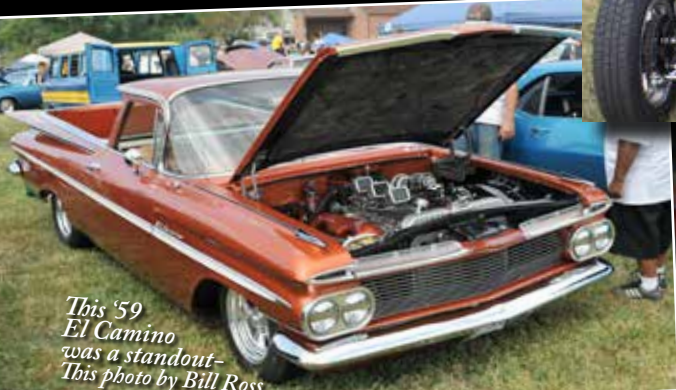
BASH!

SEPTEMBER 5TH 2015



Photos by
Mike Robinson

Thanks to the Pistons Street Rod Club, the hallowed ground of the **Big M** was once again after many years, the showcase for hundreds of street machines for **The First Annual Big M Bash**. The drive-in is, of course, gone forever, but the fairgrounds next to it sure brought back lots of memories...



*This '59
El Camino
was a standout-
This photo by Bill Ross*





Future rodder →



Yep, there it is... The 'ole Big M.
Photographer and date taken is unknown, but it looked like this forever.
You can see the movie screen in the background. Sigh.



Churchville
bound
again!



Delaware Park Beers & Gears Show

photos by Bill Ross



October 24th



Dietz **Auto Repair & Body Shop**

Dietz Auto Repair and Body Shop

*offers a wide range
of services from
frame off restora-
tion to the smallest
of repair. Stop in for
an estimate on your
Collectors car, minor
repairs or an over all
paint job.*



The Area's Finest Restoration Shop

Collision & Insurance Work • Body & Paint Work • Custom Paint



*We have top of the
line mechanics
and restoration
specialists. Many of
our cars have been
featured at the
Mecum Auction.*



410-879-0100

2817 Belair Road • Fallston, MD 21047
www.dietzauto.com • Family owned for over 30 years!

December 2015 / January 2016

Club News



10th Annual Dover Downs Luncheon

Don't sit around wondering what to do with yourself in late January. On January 31st, it's **DOVER DOWNS LUNCHEON TIME**. Might be cold out, the food at the Fantastic **Festival Buffet** on the second floor above the casino is always fresh & hot. All are welcome; starts at 12 Noon. Become a Gold Card Member and receive \$2 off lunch. Pay as you enter, will be held no matter the weather. If you wish, bring your favorite ride along. For more info, call Tom 302-584-3569 or Bob 302-690-0798.



The Edgewood Lions

The Edgewood Lions Club's 4th Annual Car Show on October 12th was a success thanks to a lot of great people and sponsors. Thanks, Bob Sullivan. photo by Don Suter.

Delaware Park Car Beers 'n Gears

Just a few of the smiling faces (Staff) that you will SEE at the Delaware Park Car Show. With over 650 cars in attendance TRI-SAW Events says THANKS for SHOWING up and Hope to SEE you in May.



Tri-County Cruisers Club's 16th Annual Rod & Custom Car Show

Tri-County Cruisers Club's **16th Annual Rod & Custom Car Show** that was held on September 18th under the lights on the property of the **Baden Volunteer Fire Department's** ballfield. The weather was perfect throughout the afternoon, Yummy ribs, bar-b-que, and more....what a combination to perk-up an evening event! and evening hours as the excitement built to learn who would take home a trophy from this fundraiser for Cancer and the Community. The club helps others by sharing their love of their rods in shows that help needy organizations. Although it is a lot of unseen work to put on a show, we are proud of our success to contribute financially to Hospice care and in areas of our community where there is a need. We take pride in this work with our hobby, to make things better for others.

You play a very important part to all of our street rod clubs and street rod car lovers out here! **The Cruise Guide** helps clubs be seen and encourages participation as a group to help others with their love of their rods in shows to help needy organizations.

Although it is a lot of unseen work to put on a show, we are proud of our success to contribute financially to Hospice care and in areas of our community where there is a need. We take pride in this work with our hobby, to make things better for others. A big "THANK YOU" to the Maryland Independent for listing this event and to those Community Businesses that supported it. The success of each show is a tribute to not only the businesses for their support, but also to the many rodders who participate and the wonderful general public!

Roger Hamilton



Best of Show: Tri County Cruisers- pictured left to right: Roger Hamilton, Tri-County Cruisers' President, Jeremiah Dupree of Bowie with his beautiful '57 Chevy BelAir Hard Top, and his brother, Roland Dupree, who was a partner in building the car. We will feature their story in a future Reader's Rides. Ladies Choice went to Angela Orfield's '67 Chevy "Pink."

Have news about your club you would like to share? Contact phutchins2@comcast.net

AutoPlusSM

AUTO PARTS

Freshen Up Your Engine for Cruisin' Season!

Auto Parts & MACHINE SHOP

Machine Shop Services Provided:

- Complete Cylinder Head Service
- Crankshaft Grinding
- Brake Drum and Rotor Resurfacing
- Small Engine Rebuild
- Turn Flywheels
- and Much More



Bel Air store Staff, from left to right Jim, Bill M, Bill G, Matt

Come see us for all of your automotive parts, paint and accessories, and when you need to freshen up your engine.

410-838-3344 • 800-253-7798
331 Baltimore Pike Bel Air, MD 21014

AutoPlus Locations where you can pick up a copy of the Cruise Guide

1007 Old Phila. Rd Suite 400, Aberdeen, Md.
 24 Flint Drive, North East, Md.
 201 E. Main St. Rising Sun, Md.
 2604 Annapolis Blvd. Severn, Md.
 3315 Old Capital Trail, Wilmington, De.
 7 Tuc Road, Westminster, Md.
 517 Washington St. Chestertown, Md.
 9107 Bel Air Road, Baltimore, Md.
 135 Kurtz Ave. York, Pennsylvania
 26 Creamery Lane, Easton, Md.
 25 Maple Ave., Hanover, Pennsylvania
 270 Interstate Court, #2 Frederick, Md.
 331 Baltimore Pike, Bel Air, Md
 114 St. Clair Place, #101 Stevensville, Md.
 1305 Govenor Court, Ste. F Abingdon, Md
 120 S. Governors Ave. Dover, Delaware
 1651 Crofton Blvd. #8, Crofton, Md.
 1337 Liberty Road, Sykesville, Md

Curley's Corner

Curley's Top 10 Quotes about getting old

It's hard to be nostalgic when you can't remember anything.
 As we grow older; the less and less we feel our oats and
 the more we feel our corns.

Don't take life so seriously; it's not permanent.

Inside every older person is a younger person wondering-
 what the hell happened?

Few women admit their age. Few men act theirs.

Your memory is shorter and your complaining is longer.

Age is a question of mind over matter. If you don't mind,
 it won't matter.

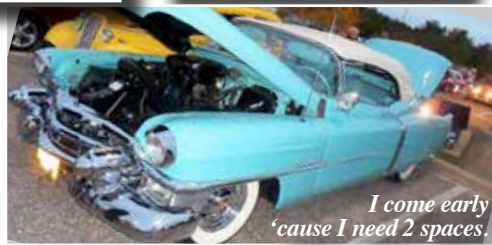
Do not regret growing older. It is a privilege denied to many.
 I still have a full deck; I just shuffle slower now.

Age is all in your mind. The trick is keeping it from creeping
 down into your body.

Can you even remember when you got your windshield
 cleaned, oil checked, and gas pumped, for free?
 And you got trading stamps to boot!

Lost in the 50's at Marley Station Cruise

photos by Mark Schappell



I come early
'cause I need 2 spaces.

1947 NORMAN TIMBS SPECIAL

Indiana Museum of Art 2015

photo by Bill Ross



Mechanical Engineer **Norman Timbs** created the *Times Special* for his personal use. It is a visually arresting mid-engine automobile that epitomizes grace and speed, with its elongated, curvilinear forms and seemingly single piece body. There are no doors and the body is comprised of two hand formed shapes. Timbs started with drawings and quarter-scale clay models. He then built a full-scale wooden frame over which aluminum panels were shaped and welded together. The car graced the cover of the October 1949 of *Motor Trend* magazine. The Special took more than two and a half years at a cost of 10,000, hardly a simple home hobbyist effort.

*On-Site paint
finish repairs*



THE
paint/medic INC.
AUTO TOUCH UP

- Bumper Scuffs
- Black Trim
- Mirrors
- Knicks and Chips
- Clear Coat Scratches
- Headlight Resurfacing

Call for Free Estimate

**Automotive, Trucks, Collector Cars,
Aircraft, Marine, Fleets and Golf Carts.**

23 years experience, fast friendly service, at your convenience.

410-456-2227

Douglas Wood the "Paint Medic", Inc. • P.O. Box 180, Fork, Maryland 21051

"Like" Us on Facebook - paint medic inc.
www.bumperpaintrepair.com

Brian Hensley's

H&H AUTO BODY & REPAIR

**Collision Specialist - Insurance Work
Full Time Mechanic On Duty**

See us for all your paint & general auto repairs

410-929-0251

319 N. Adams St.
Havre de Grace, MD



www.handautobodyandrepair.com

We also do Custom Exhaust Work

Bent just Right .com

2817 Belair Road #3 - Fallston, MD 21047

Factory & Custom Exhaust Systems



**FULL AUTOMOTIVE
SERVICE CENTER**

410-877-7600

Kip's Tech Tip - by Kip Kurzmann

"THE CURVE"

Ignition curves (the advance) and why they are important...

For almost 50 years I have been 'setting up' distributors for race car, street machine, and muscle car enthusiasts and it still amazes me how many do not understand why every car has different ignition timing and advance curve requirements. Hopefully, this month's tip will shed some light on why it is so critical to a car's performance.....

First, there are three parts of an ignition distributors timing. They are the initial timing, mechanical advance, and the vacuum advance. The initial timing is what is established when the car is at idle. It can be as little as 4 degrees or as advanced as 20 degrees.

Next, is the 'Total Advance'. Total advance is the sum of the initial timing and the mechanical advance in the distributor. The way to arrive at a total advance number takes into consideration the cars weight, size of engine, compression ratio, type of combustion chamber, the stall speed of the converter if it is an automatic transmission car, rear differential ratio, the diameter of the rear tire, carburetor size, cam specifications...etc. This is why any off-the-shelf performance distributor might not work for your car's particular application.

Once you have arrived at a total advance number (using all of the information above), you need to set "the speed" at which the mechanical advance comes in when driving or racing the car. This is done by using various distributor weights and springs to either bring the 'curve' in faster or slower, depending upon your application.

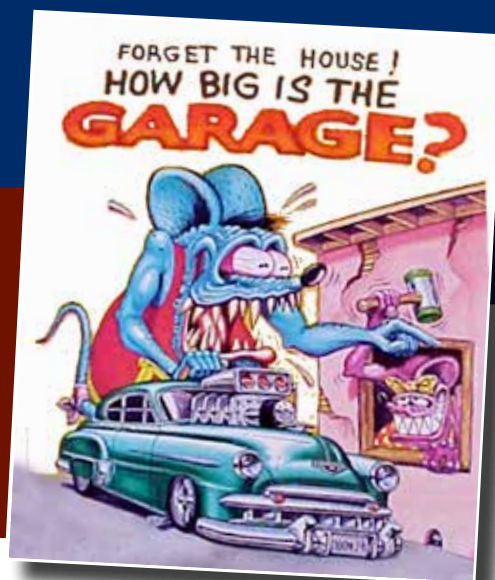
In today's computer age the new 'direct' ignition engines can use a laptop to develop the proper curve for a car. All of the variables which I mentioned above are usually in the program. You just need to add your specific type of car and how you plan to use it....thank you and Happy Cruising.



Man Caves

is our new feature page showcasing the Gearhead's favorite building—**The Garage.**

It is a revered place, where guys (and gals) who really love cars can work, or just hang out and BS with friends and experience the satisfaction you get from building and owning a cool car or two. For some, it is a home away from home. Hell, we bet some of you have more \$ in the garage than you do in your home! Show us your Man Cave. Go to www.carcruiseguide.com or email Dave Bielecki, davebielecki@aol.com 410-937-6866 (Of course, the location will not be disclosed).



Doug Wood Harford County, Maryland

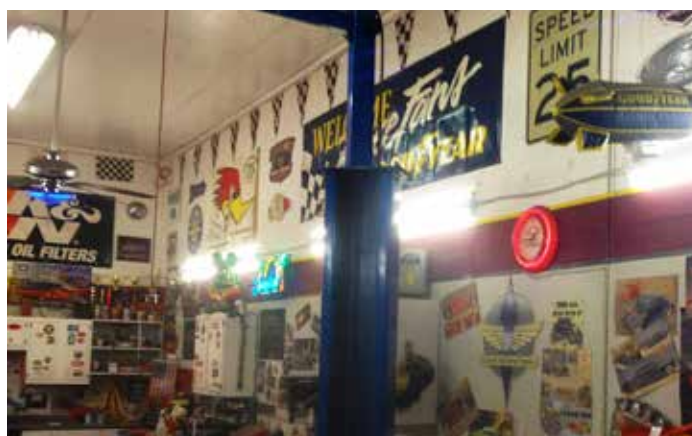
Doug Wood is the owner of **Paint Medic, Inc.** and President of our **Custom & Classic Car Foundation.** Doug has built many cars, bikes and motors here over the last fifteen years or so, but has kept his beloved '64 Olds Dynamic 88 custom lowrider and a '69 Harley Shovel/Pan.

Doug's natural habitat is clean and functional with a lift, heat, tunes, security system, etc, and of course, it is festooned with contemporary Man Cave items: Neon, Banners, Signs, Vintage Drag Posters, Clay Smith Cams, Rat Fink, Half-Nekid Wimen, etc.

While I was snapping pictures, I spotted a pair of early 60's buckets seats. Turned out that he once planned to put them in the "The Barge," but has since decided he likes his sofa-like bench seat. He let 'em go cheap; now they're getting redone and going in the Nomad.

Doug's a good guy. His ad for paint & bumper repairs is on page 29; he will come to you! And ask him how you can get a young person involved in the car hobby!

-Hutch





We Can Help Sell Your Classic, Exotic or Muscle Car- **WITHOUT IT LEAVING THE GARAGE!**

Most cars sell within 30 days. All of the cars which have sold did so without the buyer coming to see them- "sight unseen." Every car has left the state in which the seller was living. We offer international sales exposure, video and photography, 24/7 marketing, all the necessary sales documentation, and delivery arrangements..... all for one flat fee.



J.D. Kurzmann

Phone: 410-937-0719

Email: jkurzmann@yahoo.com

www.kurzmannsautos.com



Mon-Sat. 8am-4pm • 8'x 22' oven for large projects • Fast turn around • Competitive pricing • Sand and soda blasting available



THE LIFT PROFESSIONALS
WITH OVER 30 YEARS IN BUSINESS
8 LOCATIONS NATIONWIDE!
VISIT OUR WEBSITE TODAY!

GREG SMITH
Equipment SALES, INC.

EQUIPMENT ON DISPLAY
IN OUR HUGE SHOWROOM!
250 EXECUTIVE DR., STE 1
NEWARK, DE 19702
TOLL FREE 866.422.9813



WWW.GREGSMITHEQUIPMENT.COM

OPEN M-F 8-5:30
SAT 8-NOON

2-POST BASEPLATE LIFTS

Atlas® BP8000
8,000 LB. CAPACITY

\$1495 AS LOW AS \$43/MONTH

- Commercial Grade
- FREE Truck Adapters
- Extra Low Pad Height
- Super-Symmetric Arms
- Single Point Lock Release
- Mounting Hardware Included

PERFECT FOR LOW CEILINGS!

Atlas® BP9000
9,000 LB. CAPACITY

\$1795 AS LOW AS \$45/MONTH

- Commercial Grade
- Powder Coat Finish
- FREE Truck Adapters
- Super-Symmetric Arms
- Single Point Lock Release
- Mounting Hardware Included

THOUSANDS SOLD!

Atlas® BP10000
10,000 LB. CAPACITY

\$2295 AS LOW AS \$61/MONTH

- Commercial Grade
- Powder Coat Finish
- FREE Truck Adapters
- Super-Symmetric Arms
- Single Point Lock Release
- Mounting Hardware Included

IN STOCK AND READY TO SHIP!

Atlas® BP12000
12,000 LB. CAPACITY

\$2995 AS LOW AS \$80/MONTH

- Symmetric Arms
- Adjustable Width
- Commercial Grade
- Powder Coat Finish
- FREE Truck Adapters
- Single Point Lock Release

ON DISPLAY IN OUR SHOWROOM!

2-POST OVERHEAD LIFTS

Atlas® 90HSC (SS)
9,000 LB. CAPACITY

\$1795 AS LOW AS \$45/MONTH

- Commercial Grade
- FREE Truck Adapters
- Super Symmetric Arms
- Single Point Lock Release
- Mounting Hardware Included

MORE MODELS AVAILABLE

IN STOCK AND READY TO SHIP!

WATCH OUR LIFT TESTING VIDEOS ON OUR WEBSITE!

Atlas® 10-0HSC
10,000 LB. CAPACITY

\$2195 AS LOW AS \$59/MONTH

Atlas® OH-10X
10,000 LB. CAPACITY
EXTRA TALL
EXTRA WIDE!

\$2295

EXTRA TALL!

PV SERIES 2-POST OVERHEAD LIFTS

Atlas® PV-9P
9,000 LB. CAPACITY

\$2095 AS LOW AS \$50/MONTH

- Commercial Grade
- FREE Truck Adapters
- Single Point Lock Release
- Mounting Hardware Included
- Asymmetric/Symmetric Arms

WATCH OUR VIDEO ONLINE!

Atlas® PV-10P
10,000 LB. CAPACITY

\$2395 AS LOW AS \$64/MONTH

- Commercial Grade
- FREE Truck Adapters
- Single Point Lock Release
- Mounting Hardware Included
- Asymmetric/Symmetric Arms

ON DISPLAY!

Atlas® PV-12P
12,000 LB. CAPACITY

\$2995 AS LOW AS \$80/MONTH

- Symmetric Arms
- Commercial Grade
- FREE Truck Adapters
- Single Point Lock Release
- Adjustable Column Height
- Mounting Hardware Included

EXTRA TALL EXTRA WIDE!

Atlas® PV-15P
15,000 LB. CAPACITY

\$3495 AS LOW AS \$90/MONTH

- Symmetric Arms
- Commercial Grade
- FREE Truck Adapters
- Single Point Lock Release
- Adjustable Column Height
- Mounting Hardware Included

EXTRA TALL EXTRA WIDE!

4-POST HOBBYIST LIFTS

COMPARE OUR 4-POST HOBBYIST LIFTS ON OUR WEBSITE

Atlas® GARAGE PRO 8000
8,000 LB. CAPACITY

\$1995 AS LOW AS \$53/MONTH

- FREE Steel Approach Ramps
- Single Point Lock Release
- 165 1/2" Runway Length
- FREE Caster Kit
- FREE Drip Trays
- FREE Jack Tray

ON DISPLAY!

Atlas® GARAGE PRO 8000 EXT
8,000 LB. CAPACITY

\$2195 AS LOW AS \$59/MONTH

- FREE Steel Approach Ramps
- Single Point Lock Release
- 165 1/2" Runway Length
- FREE Caster Kit
- FREE Drip Trays
- FREE Jack Tray

THOUSANDS SOLD!

Atlas® 409-HP
9,000 LB. CAPACITY

\$2795 AS LOW AS \$74/MONTH

- FREE Steel Approach Ramps
- Single Point Lock Release
- 190" Runway Length
- FREE Wheel Stops
- FREE Drip Trays
- FREE Jack Tray

MORE MODELS AVAILABLE

PORTABLE EXTRA TALL EXTRA WIDE!

4-POST COMMERCIAL GRADE LIFTS

Atlas® 412
12,000 LB. CAPACITY

\$3195 AS LOW AS \$84/MONTH

- Mounting Hardware Included
- 186 1/2" Runway Length
- Air Operated Single Point Lock Release
- Commercial Grade
- 74" Lifting Height

COMMERCIAL GRADE

WATCH OUR VIDEO ONLINE

Atlas® 414
14,000 LB. CAPACITY

\$3695 AS LOW AS \$96/MONTH

- 74" Lifting Height
- Commercial Grade
- Air Operated Single Point Lock Release
- 207" Runway Length
- Mounting Hardware Included

THOUSANDS SOLD!

4-POST ALIGNMENT LIFTS

Atlas® 412A
12,000 LB. CAPACITY

\$4095 AS LOW AS \$106/MONTH

- 157" Max. 2-Wheel Alignment Wheelbase
- 154" Max. 4-Wheel Alignment Wheelbase
- Air Operated Single Point Lock Release
- 76 1/4" Lifting Height

COMMERCIAL GRADE

INCLUDES

- BUILT-IN SLIP PLATES
- ALIGNMENT TURNABLES (2)
- MOUNTING HARDWARE

OPEN FRONT MODELS ON OUR WEBSITE!

Atlas® 414A
14,000 LB. CAPACITY

\$4695 AS LOW AS \$125/MONTH

- 175 1/4" Max. 2-Wheel Alignment Wheelbase
- 172 1/4" Max. 4-Wheel Alignment Wheelbase
- Air Operated Single Point Lock Release
- 76 1/4" Lifting Height

WWW.GREGSMITHEQUIPMENT.COM

PRICES & SPECIFICATIONS ARE SUBJECT TO CHANGE WITHOUT NOTICE. WE ARE NOT RESPONSIBLE FOR MISPRINTS.

THE LIFT PROFESSIONALS
WITH OVER 30 YEARS IN BUSINESS
8 LOCATIONS NATIONWIDE!
VISIT OUR WEBSITE TODAY!

GREG SMITH
Equipment **SALES, INC.**

EQUIPMENT ON DISPLAY
IN OUR HUGE SHOWROOM!
250 EXECUTIVE DR., STE 1
NEWARK, DE 19702
TOLL FREE 866.422.9813

WE SHIP ANYWHERE
VISA MasterCard DISCOVER

WWW.GREGSMITHEQUIPMENT.COM

OPEN M-F 8-5:30
SAT 8-NOON

Mid-Rise / Low-Rise Scissor Lifts

COMPARE OUR MID/LOW-RISE SCISSOR LIFTS ON OUR WEBSITE

Atlas® TD6MR 110V
6,000 LB. CAPACITY

\$1495

AS LOW AS \$40/MONTH

- Portable
- 7 Locking Positions
- 5 1/2" Minimum Height
- Extension Pads Included
- 53 1/2" Max. Lifting Height

ON DISPLAY!

MORE MODELS TO CHOOSE FROM ON OUR WEBSITE

Atlas® LR-10P 110V
10,000 LB. CAPACITY

\$1695

AS LOW AS \$44/MONTH

- Portable
- 3 Locking Positions
- 4" Minimum Height
- Positioning Blocks Included
- 25 1/2" Max. Lifting Height W/ Blocks

THOUSANDS SOLD!

6,000 Lb. To 10,000 Lb. CAPACITIES AVAILABLE

Atlas® Kwik Bay 110V
7,000 LB. CAPACITY

\$2295

AS LOW AS \$61/MONTH

- Portable
- Air Operated Locks
- 4 1/2" Minimum Height
- Positioning Blocks Included
- 41" Max. Lifting Height W/ Blocks

WE STOCK PARTS!

OVER 500 LIFTS IN STOCK AND READY TO SHIP!

FULL-RISE SCISSOR LIFTS

Atlas® SLP-7K 220V
7,000 LB. CAPACITY

\$3595

WATCH OUR VIDEO ONLINE

- Adjustable Width
- Air Actuated Locks
- 16 Locking Positions
- 4 1/2" Minimum Height
- 74" Max. Lifting Height
- Locking Approach Ramps
- Positioning Blocks Included
- Mounting Hardware Included

THOUSANDS SOLD!

COMMERCIAL GRADE

Atlas® SLP-9K 220V
9,000 LB. CAPACITY

\$4295

78" Max. Lifting Height

WE STOCK PARTS!

7,000 Lb. To 12,000 Lb. CAPACITIES AVAILABLE

MOBILE COLUMN LIFTS

Atlas® MC-11 HYD 220V
44,000 LB. 1-PHASE
MOBILE COLUMN LIFT

\$16995

ADJUSTABLE FORKS

- Simultaneous Column Operation
- Extra Large Column Base
- 67" Max. Lifting Height
- Included Dolly System
- Unlimited Wheelbase

PER SET OF FOUR

AS LOW AS \$451/MONTH

WATCH OUR VIDEO ONLINE

MORE MODELS AVAILABLE

TIRE CHANGERS

MOTORCYCLE & CAR / TRUCK TIRE CHANGERS IN STOCK & ON DISPLAY!

Wheel Clamp Tire Changers 110V

\$995

AS LOW AS \$995 WHEN BOUGHT IN A COMBO!

MORE MODELS AVAILABLE

PERFECT FOR ATV AND MOTORCYCLE TIRES

MORE MODELS ON OUR WEBSITE!

Assist Arm Machines 110V

\$1995

AS LOW AS \$1995 WHEN BOUGHT IN A COMBO!

MORE MODELS AVAILABLE

WE STOCK PARTS!

Dual Assist Arm Machines 110V

\$2295

AS LOW AS \$2295 WHEN BOUGHT IN A COMBO!

MORE MODELS AVAILABLE

WE HAVE HUNDREDS OF DETAILED PHOTOS AND DOZENS OF VIDEOS ON OUR WEBSITE

THOUSANDS SOLD TO PROFESSIONAL TIRE SHOPS

WE HAVE A HUGE PARTS AND ACCESSORIES INVENTORY

COMPARE OUR TIRE CHANGERS ON OUR WEBSITE

Truck Tire Changers 1 PHASE OR 3 PHASE

\$5195

AS LOW AS \$5195 WHEN BOUGHT IN A COMBO!

SUPER DUTY

WHEEL BALANCERS

MOTORCYCLE & CAR / TRUCK WHEEL BALANCERS IN STOCK & ON DISPLAY!

Atlas® WB11 110V
HOOD INCLUDED

\$1095

AS LOW AS \$1095 WHEN BOUGHT IN A COMBO!

MORE MODELS AVAILABLE

WE HAVE HUNDREDS IN STOCK AND READY TO SHIP!

Atlas® WB41 110V
HOOD INCLUDED

\$1295

AS LOW AS \$1295 WHEN BOUGHT IN A COMBO!

MORE MODELS AVAILABLE

WATCH OUR VIDEO ONLINE

WE HAVE HUNDREDS OF DETAILED PHOTOS AND DOZENS OF VIDEOS ON OUR WEBSITE

Atlas® WB55 110V
HOOD INCLUDED

\$2095

AS LOW AS \$2095 WHEN BOUGHT IN A COMBO!

MORE MODELS AVAILABLE

COMPARE OUR WHEEL BALANCERS ON OUR WEBSITE

Atlas® WBT-210 Truck Tire Balancer 220V 1 PHASE

\$3195

AS LOW AS \$3195 WHEN BOUGHT IN A COMBO!

COMMERCIAL GRADE

BUBBLE BALANCER

\$59

WWW.GREGSMITHEQUIPMENT.COM

PRICES & SPECIFICATIONS ARE SUBJECT TO CHANGE WITHOUT NOTICE. WE ARE NOT RESPONSIBLE FOR MISPRINTS.



photos by Mike Robinson

Budget Cruisers' Perryville Cruise on Oct 25th was a great time, and **Big Rick** & his buddies raised \$1300 for the Foundation- a Big CS&CG 'Thank You' to you guys & gals for your support.



Richard Moure, Jr.
Woodworks
 Automotive woodwork
 Antique and Fine Furniture
 Restoration and repair

Upper Falls
 Maryland 21156

410-340-8131

moure@comcast.net

STOLTZFUS FARM SERVICE INC.

Erwin Stoltzfus

1043 Gap Newport Pike
 Cochranville, PA 19330
 610-593-2407 Ext. 103
 610-593-2482 Fax
 stoltz41@zoominternet.net
 www.stoltzfusinc.com



Calvert Hall

October 24th



photos by Hutch



We will be doing a feature on Steve Gordon of Mason Dixon's '52 Power Wagon... Street Rod? It's a Hemi.

AAA DRY FOAM
 PROFESSIONAL CLEANING, INC.
 Since 1994

Serving Delaware, Pennsylvania New Jersey & Maryland

New Castle County
 (302) 798-6789

Southern New Jersey
 (856) 223-9993

Kent & Sussex County
 (302) 228-6920

Pennsylvania
 (610)566-2848

- Mold Remediation
- Air Duct Cleaning
- Dry Vent Cleaning
- Carpet Cleaning
- Upholstery Cleaning
- Flood/Water Damage Cleaning Repair




A+ AUTO STYLING



410 877 TINT

Window Tint - Custom Vinyl Stripes - Full Vinyl Wrap

109 East Jarrettsville Road Unit D, Forest Hill MD 21050



1804 Taylor Avenue
Baltimore, MD 21234

Doug Hopple
Owner

**Rathell Motors
Collision Repair**

Business Hours: 7:30 - 4:30 M-F

PH: 410.665.8900
Fax: 410.665.8901

Domestic & Import

Oxford First Friday Car Show

September 4th





GasTanks.com

www.QuantaProducts.com, 800-235-8788 or 410-658-5700

Gas Tanks

A complete line of factory & era correct gas tanks. Over 700 models for many of your 1949 & newer cars, trucks & vans.

Fan Belts

Fully licensed* original type fan belts for your 1953 - 82 Chevrolet, 1949 - 57 Cadillac, 1964 - 71 Pontiac & 1966 - 72 Mopars. Made to original factory blueprint specs.



Specialty Paints

Specialty paints and detail paints for inspection marks & frame stenciling. Exact factory color match for Corvettes & Camaros.

Radiators

Our Classic line offers three and four core radiators for most classic applications are built to the original manufacturers specs right here in the USA.



Fuel Lines

All of our fuel lines are Laser Measured & CNC Precision bent to OEM specs for most classics. Available in both O.M. Steel and Stainless Steel.



Sending Units

Over 700 models of sending units & fuel modules for most classic and late model cars, trucks & vans. All made with corrosion resistant steel to OEM specs.

Quanta Products LLC, 743 Telegraph Road, Rising Sun 21911



R&R Automotive & Performance Specialties

Specializing in

Ring & Pinions • Differentials
Suspensions and Performance

2133 N. Fountain Green Rd.
Bel Air, Maryland

Rick Dawson, Owner
(Formerly of East Coast Off Road)

443.640.6115

Cliff's AUTO PARTS

410-457-4193

Auto Parts, Paint Supplies & More

Authorized Goodmark Dealer

NOW AVAILABLE
MATRIX SYSTEM
AUTOMOTIVE
FINISH PAINT

Mechanic On Duty

General Mechanical Repairs

Tires - Mounted & Balanced

Oil Filter Change • Brakes

Mufflers & Tailpipes

FREE Battery Check

**AS SEEN ON
HISTORY CHANNEL'S
AMERICAN
RESTORATION AND
COUNTING CARS**



NOW IN STOCK - MATRIX FX SERIES CUSTOM PAINT



See us on Facebook

410-457-4193 • 1-800-287-6152

4727 Conowingo Road, Darlington, MD 21034

Monday - Friday 8-6 • Saturday 9-4 • Sunday Closed

Hurley's GOLF CARTS

Full Custom

SALES • SERVICE • PARTS



WE BUY, SELL,
OR TRADE ANY YEAR

www.hurleysgolfcarts.com



410-671-9024
1114 MOUNTAIN RD.
JOPPA, MD 21085



ESH UPHOLSTERING

ALEX & AUSTIN EDWARDS

443.567.6795

ESHUPHOLSTERING@GMAIL.COM

Reader's Rides

Jaden Newcomer's '65 Chevy C-10

As car show season comes to a close, it's time to reminisce about the weekends past and sharing our cars with many enthusiasts. At every show, old car buddies would gather, set up their folding chairs and talk about subjects that your parents told you to never discuss in public. You know, politics, the economy and the current state of the world. Our effort to address where our car hobby is going to be in the future has entered the conversation in recent years, especially in a day and age when our youth seem more interested in the internet and video games than getting their drivers license. The facts are, more and more of our youth today are not driving until after high school. Even fewer are interested in the automobile for anything other than a means of transportation.

Well not all. Meet 11-year old Jaden Newcomer from Ocean Pines, Maryland. Like other kids his age, he plays on a youth baseball team, he plays video games, but also loves the automobile. As a toddler he collected match box cars. He had hundreds of them. He would wipe them down and display them just like at a real car show. He knew all the makes and models. Just pick one up and he could tell you all about that brand of car.

Now Jaden has his own real project vehicle. It's a 1965 Chevy C10 Fleetside pickup truck. It is a joint project that Jaden shares with his grandfather. The truck was purchased on the internet from New Jersey and driven back to the eastern shore of Maryland. It broke down three times and Jaden's grandmother asked several times if this was money well spent.



Jaden is pleased to say that the truck is road-worthy, but still needs a lot of work. He works on it every chance he gets and can't wait for the day that he can take the truck to its first show or cruise-in. The truck has a 230 six cylinder with a three speed on the column. It was recently lowered using a kit from CPP and the rear wood bed is being replaced (see photos).

This summer, Jaden received an award from the Redman Club, for being the top youth judge at their car show in Georgetown, Delaware. Over 100 cars at the show and he picked five of the winners and the Best of Show. This recognition came as he competed against other youth judges. So there may be some hope for our hobby yet, if we continue to get more young men and women involved. Take a kid to a Car Show. Let's keep this part of history alive and shared for years to come.

Publishers note: This is what the Foundation is all about folks, check out :

www.customclassiccars.org

Have a car or truck with an interesting story? Contact phutchins2@comcast.net

Check out our new site!

Club links, slide shows, video,
and lots more show pics we
couldn't fit in our magazine ..

carcruiseguide.com



Pet Portraits

Professional, original artwork
from your photo for as little as
\$99.00 Great gift and keepsake.
Framing available.

www.hutchart.net

phutchins2@comcast.net 410-817-4270



**ENTERPRISE
UPHOLSTERING**

410-893-9684 • enterpriseuph.com

**VISIT OUR WEBSITE FOR PHOTOS
OF OUR WORK!**



1307 Enterprise Court,
Bel Air, MD 21014

Located near the intersection
of Bypass Rt 1 & Rt 543



ShowCards by Suze

Tell the story of your ride!

**Custom-Designed
Show Boards**

**Quality Artwork
and Materials**

**Reasonably
Priced**



*Makes a great
gift for your
cruiser!*

**Check our new website!
www.showcardsbysuze.com**



Suze Rooney • 410-599-2914

© 2013

**Big Rick
& Cleve**
aka the
"Dirt City Junk Runners"

**Spinning the Tunes
for You**

**DJ services for
your next Car Show**

410-457-0470

**W.P.
GLASS ETCHING**

*The Piotrowski's
1972 Chevrolet Impala*

Red Bird

*Comets, Comets & Stars
Baltimore, Maryland*

Car Show Signs, Classic Cars,
Street Rods, Vans, Bar Mirrors,
& Glassware.

410-994-3820
MoonIt128@outlook.com

**Graphicly
SPEAKING™**

• Vehicle Wraps • Banners
• Yard Signs • Wall Murals
• Brochures and much more

kim.blevins@comcast.net
410.459.6400

**ATLANTIC
SPEED
CENTER
INC.**

3 Brookside Drive

Specializing In High Performance
And Custom Parts Since 1960
(302) 996-5393

THE OFFICIAL OLD GUYS SPEED SHOP
WE FINANCE WE INSTALL
oldguyspeedshop@gmail.com

- Machine Shop Service
- Street Rod Equipment
- Muscle Car Body Parts
- Mag Wheels and Tires Always on Sale

KEEP IT ON THE ROAD NOT IN THE SHOP

WITH REGULAR SERVICES
AND PREVENTATIVE MAINTENANCE
FROM THE PROS



AutoPros

OF ABERDEEN



640 S PHILADELPHIA BLVD, ABERDEEN MD 21001

Phone: (410) 272-0767 or Text: (443) 356-2272

www.AUTOPROSABERDEEN.com



Cruisin' into the New Year with The Car Show & Cruise Guide

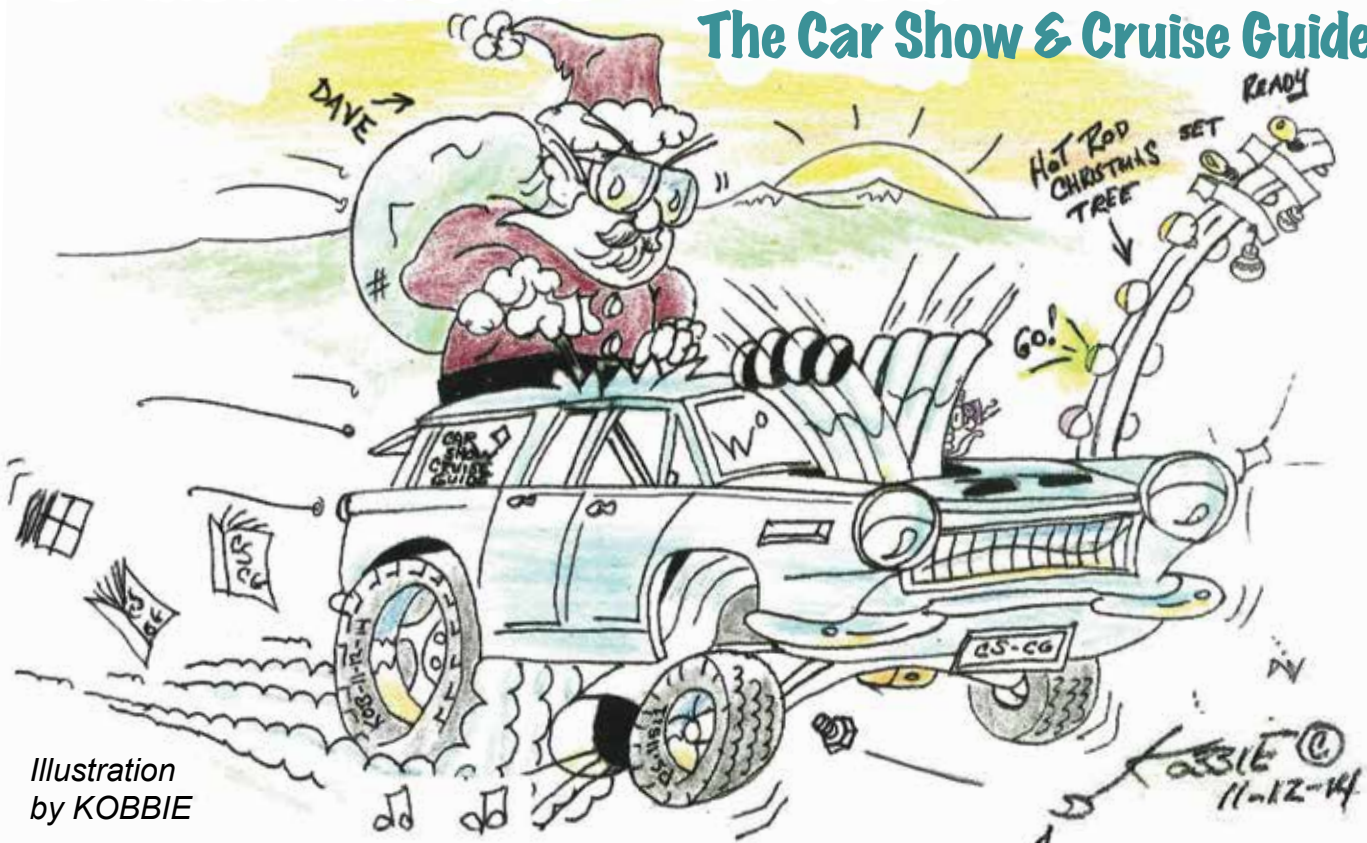


Illustration
by KOBIE

BRIAN DICKHOFF
Owner
phone 410-357-9140

KOUNTRY KLASSICS WOODSHOP
Custom Home Furnishings
since 1991

21140 Old York Road
Parkton, MD 21120
Email: Klassics@verizon.net
www.kountryklassicswoodshop.com

Taurus Auto Repair

Your Total Car Care Center
from an oil change to engine overhaul!

Free pickup & delivery of your vehicle
with any major service work. * Courtesy Shuttle

NEW LOCATION

2133 N. Fountain Green Rd., Belair
(Rt. 543- Across from Redner's Market)

We will match or beat any competitor's estimate.
Stop in and see why we have been in business since 1980.
410-399-9544 • 24 hour Towing



**Paint Stripping
and Surface
Restoration
Services**

**Eco-Friendly
Blast Equipment
& Media Sales**

**CHESAPEAKE
SODA CLEAN**

*Retail & Wholesale
Blast Media and
Blasting Supplies!*

*Baking Soda & Crushed
Glass Media Sales*

*Professional Grade
Blast Equipment Sales*

- Marine • Automotive • Residential
- Commercial Sales • Service
- Supplies • Training • Consulting

212 NAJOLES RD. #D MILLERSVILLE, MD. 21108
CELL: 410-271-2652 FAX: 410-987-4077
www.chesapeakesodaclean.com



**American
SPEED CENTERS**

Established 1973
www.americanspeedcenter.com
1420 N. George Street • York, PA 17404
717-848-6272

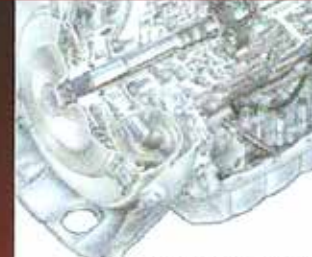


**JOPPA
AUTOMATIC TRANSMISSION**

J. Ralph Medley, Sr. Owner
Mike Kitzmiller Service Manager

410-676-1406
410-679-4333
604 Pulaski Hwy.
Joppa, MD 21085

Serving Our Community since 1963 *Family Owned and Operated*



**DAVE'S
TAG & TITLE**

IRP Plates
All MVA Tag & Title Services
33 Years of Service

410-676-1206

Hours
M-F 7:30am-5:30pm
Sat 8am-Noon


1109 Clayton Road
Joppa, Maryland 21085

**LOW
SERVICE
CHARGE!!!**

**Movies and Music
For All Occasions**

**MOVIES
& MUSIC
BY TOM**

Call Tom Patterson
410-671-7378
E-Mail: MoviesandMusicbyTom@comcast.net



REG DIXON'S SERVICE CENTER

**COMPLETE CAR
CARE FOREIGN
& DOMESTIC**

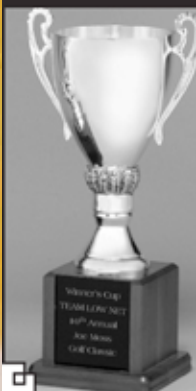


TOWING AVAILABLE • STATE INSPECTION • CAM 2 RACING FUEL

6 COLGATE DRIVE
FOREST HILL, MD 21050

410-836-8199
410-836-9913

TRI-STATE TROPHIES, INC.



Gregg & Jackie Williams
410-679-1859 • 410-676-3226

**SEE US FOR ALL YOUR
RECOGNITION NEEDS
INCLUDING CORPORATE
AWARDS & CUSTOM PLAQUES.**

1812 E. Pulaski Hwy, Edgewood, MD 21040
Fax: 410-676-0916

WWW.TRI-STATETROPHIES.COM
awards55@comcast.net



Gus Tsamouras, Realtor

Branch Manager, Bel Air Central Office

590 Baltimore Pike
Bel Air, MD 21014
Office: 410-879-0900
Fax: 410-879-2742
Cell: 410-456-0966

gus.t@NF.com



Ask Gus about his Classic!

Vynal
INDUSTRIES, INC.

Manufacturers of **Thermaline®**
Vinyl Clad Hardwood Windows

Mark C. Wilson
President

410.477.9261 Office
443.850.2305 Cell
410.477.9263 Fax

3916 North Point Road
Baltimore, MD 21222

Vynalindustries.com
Vynal1@comcast.net



Matthews
Professional
Automotive Detailing

*Full service shop-
We make your ride look
showroom new again!*

Keith Matthews

443.752.2125

500 Bynum Rd Forest Hill, Md. 21050
(right next to the big blue water tower)

*New
Accepting
Consignments* **Tool Belt**
Consignments

Shop and Consign Today!

**TOOLS
HARDWARE
EQUIPMENT
MATERIALS
AUTO/BOAT
HOBBY**

**1805 Harford Road
Fallston, MD**

443-686-9822

www.toolbeltconsignments.com



**THE
GUTTER
GUYS®**

27th Anniversary - Since 1988

"The Gutter Professionals"

We Clean, Repair & Replace Gutters

Cleaning & Repairs • GUTTERGARD • Seamless
Rain Gutters • Seamless Half Round Gutters •
Fascia & Soffit • 25 Colors • Licensed Contractor •
Fully Insured • Best Warranty • Best Pricing

**Over 300,000
SATISFIED Customers!**

**The ONLY Full Service
Gutter Company
in Baltimore to Be
Awarded...**

Angie's list.

**SUPER
SERVICE
AWARD**

**8 Years
in a Row!
2007-2014**

**FREE
ESTIMATES**

MHIC #:
129906



**10%
OFF**
**GUTTER
CLEANING &
MAINTENANCE**

THE GUTTER GUYS
1-800-GUTTER-1

With this coupon, One coupon per customer.
Cannot be combined with other offers. Valid
at participating office only. Expires 12/31/2015

**15%
OFF**
GUTTERGARD

THE GUTTER GUYS
1-800-GUTTER-1

With this coupon, One coupon per customer.
Cannot be combined with other offers. Valid
at participating office only. Expires 12/31/2015

**10%
OFF**
**SEAMLESS
GUTTERS**

THE GUTTER GUYS
1-800-GUTTER-1

With this coupon, One coupon per customer.
Cannot be combined with other offers. Valid
at participating office only. Expires 12/31/2015

CALL 1-800-GUTTER-1
FOR A FAST, FREE ESTIMATE! (488837-1)

TheGutterGuys.com

GUARANTEED LOWEST TOTAL PRICE!

We Will Beat Any Price Before You Buy & For 30 Days After!



On The Rim & Out The Door® Pricing:

Our Tire Prices INCLUDE: **FREE** Mounting **FREE** Valve Stems **FREE** TPMS Transfer*
FREE Balancing **FREE** Tire Disposal **FREE** Alignment Check

Most Others Charge Up To \$25, Per Tire, For Installation! We Don't!

PLUS, FREE LIFETIME ROTATIONS WITH ALL TIRES!

Why Choose Mr. Tire?

- All Inclusive Tire Pricing – No Surprises.
- Over 800 Company Owned & Operated Locations
To Ensure A Strict Level of Standards. Warranties honored at all locations.
- 50 Years of Experience Servicing Over 3.5 Million A Year
- We Perform Most Automotive Services
Including Manufacturer's Scheduled Maintenance Services
- Quality Brand Name Parts & Tires
- 30 Day Ride Guarantee
Try your tires for 30 days. If you don't like them, bring them back!
No questions asked!*
- Save Up to 50% Off Dealer Pricing
- We Employ ASE Certified Technicians

We Carry All The Brands You Know & Trust!



Oil Change +PLUS

GET Oil & Filter Change **ALL FOR ONLY**
PLUS Brake Inspection **\$19.99***
PLUS Check Tire Pressure
PLUS 4- Tire Rotation



*Includes up to 5 qts. of Conventional oil, new oil filter, chassis lube (where applicable), and free undercar inspection. An additional 12.50 filter or waste recycling fee applies in some areas. Tire rotations have a cash value of 3.99 per charge will be added to the retail tire price of all service work, just on tires, due to exceed 5.00 and represents costs and profits (does not apply in NY). With this coupon. Many vehicles, Not valid with other offers. Additional charges may apply. See store for complete service details/conditions. Exp. 12/31/15

Purchase of \$100 or more

TAKE AN EXTRA...
\$20 OFF YOUR BILL!
No Catch!, No Gimmicks!, No Rebates!

We want **YOU** as a Mr. Tire Customer!

Min \$100 purchase required. Valid at any Mr. Tire location. Limit 1 per customer and/or vehicle. Not all services and/or tires available at all locations. Certain restrictions and limitations apply. See store for complete details. Expires 12/31/15



OVER 800 LOCATIONS!

Directly Connect, Call:

1-866-MY-MRTIRE

1-866-696-7847

Shop Tires • Print Coupons • Make Appointments

www.MrTire.com

CRYSTAL CLEAN

Soda Blasting^{INC}
Serving MD, Southern PA, Delaware, South Jersey

Automotive
Marine
Heavy Equipment
Farm Equipment
Graffiti Removal
Stain Elimination
Food Equipment
Fire Restoration
Brick/Block/Stone
Wood Restoration
Engine Components
Truck Trailers
Mold Remediation

PVC Cleaning
Building Restoration
Plus More!



Master Card
VISA
DISCOVER
Major Credit
Cards Accepted

1527 Stockton Rd.
Joppa, MD 21085

chesapeake1612@msn.com



Mobile and In House Services Available

1-877-800-SODA